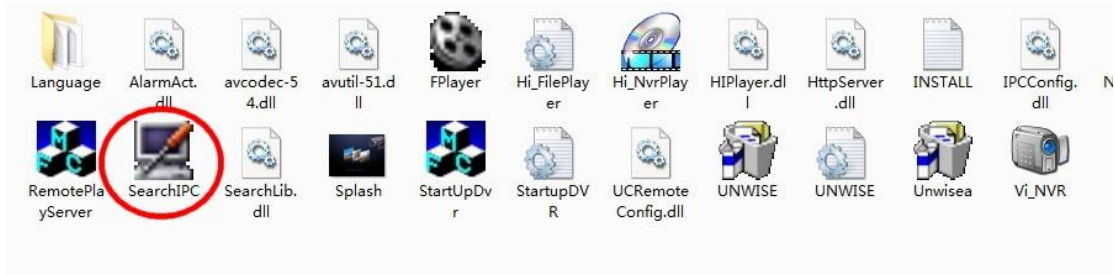
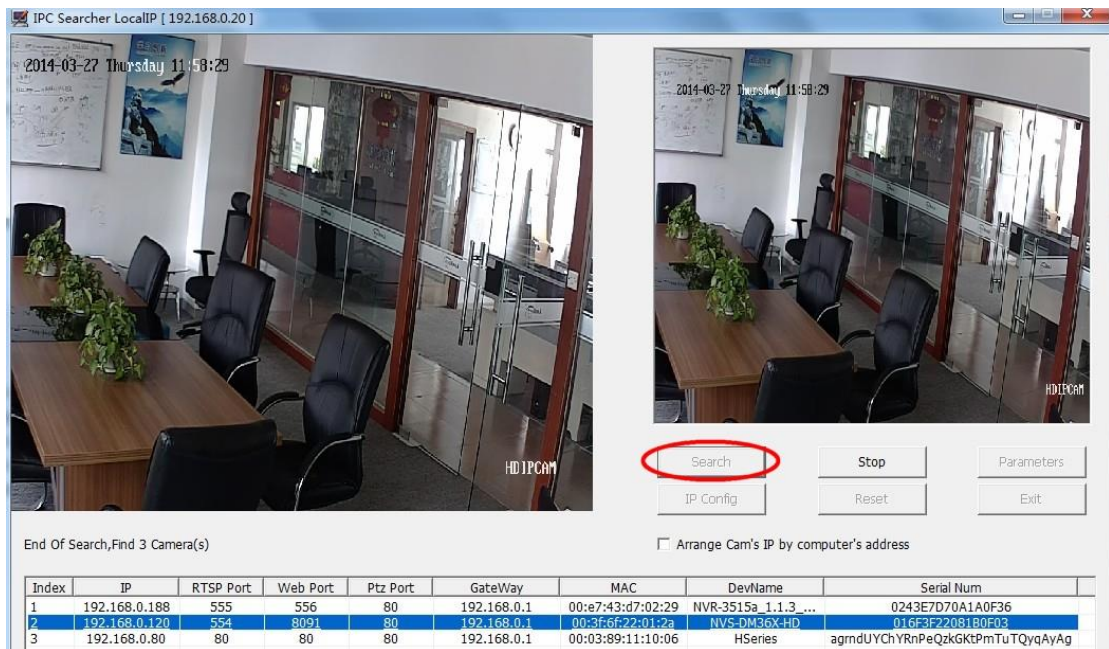


LonRock IP Camera P2P remote manual:

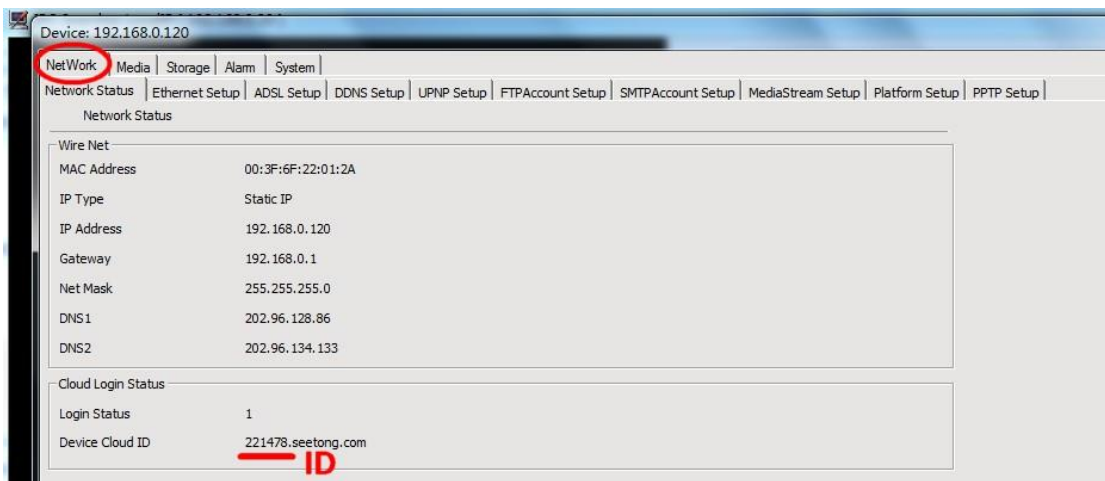
1. Install LMS (component of LonRock VMS), and open “SearchIPC”,



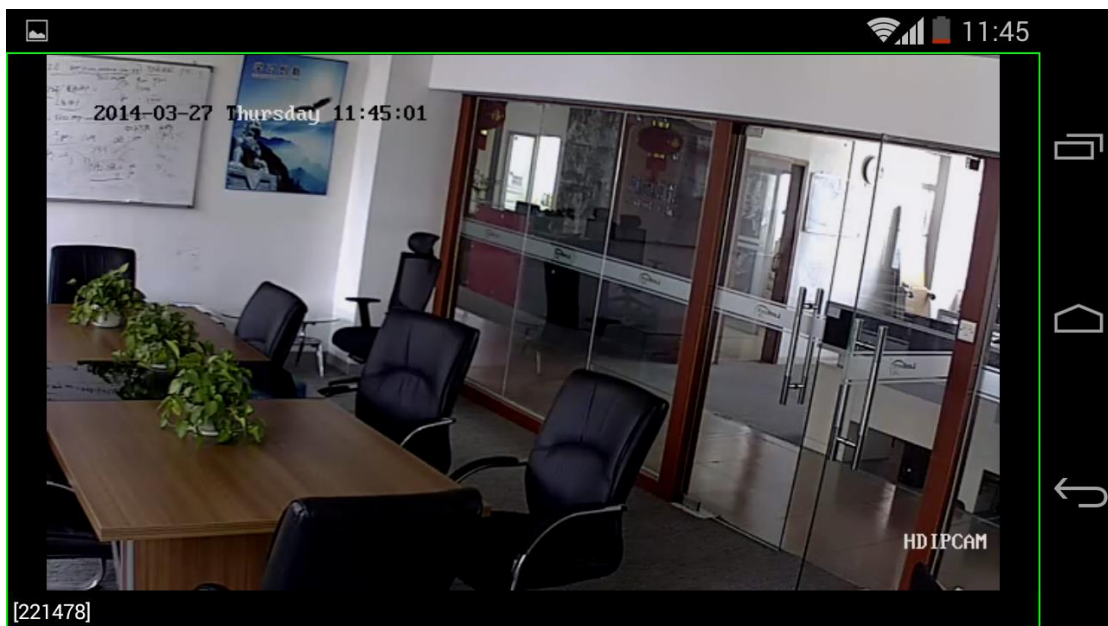
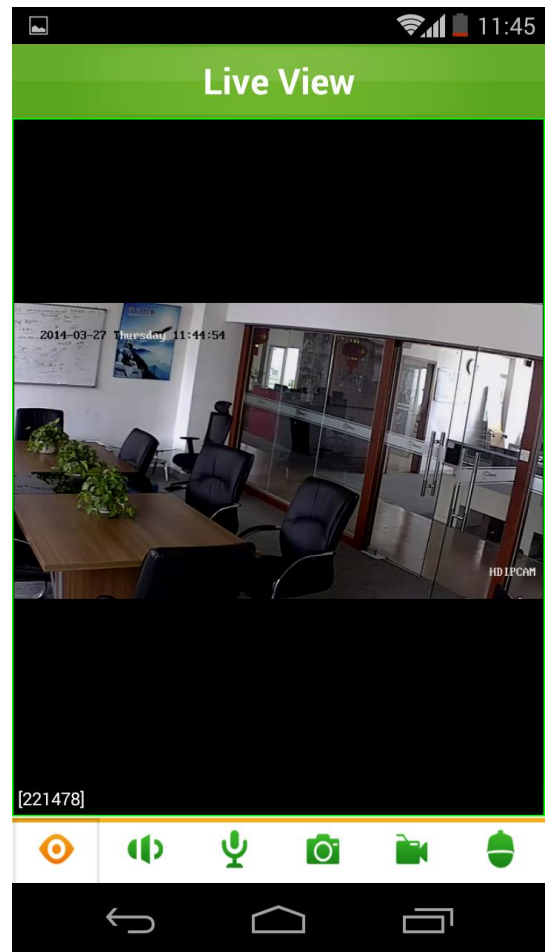
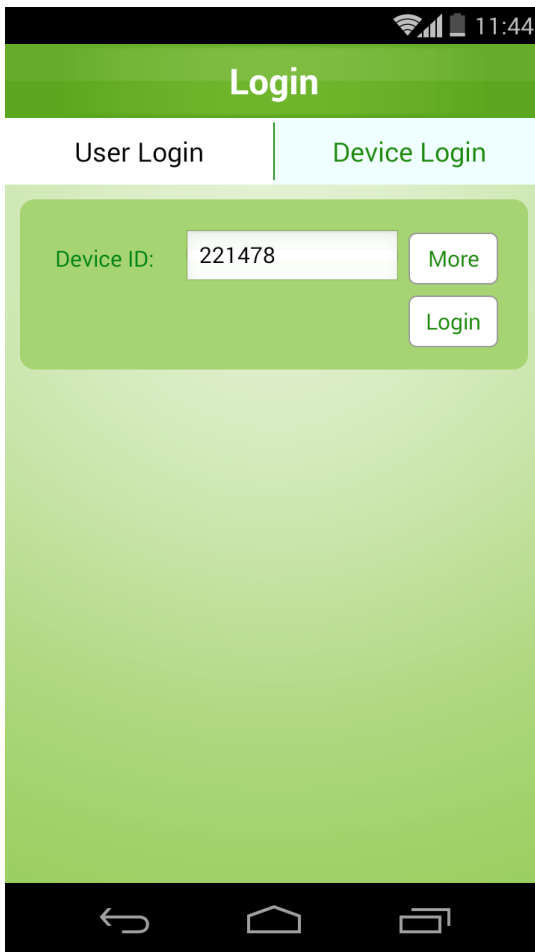
2. Click “Search”, get all cameras, take 192.168.0.120 as example. Double click to preview:



3. Click “Stop” --- “Parameters” – “NetWork” to view its Cloud ID: 221478



4. Install our mobile APP, input device ID 221478 – click “Login” to preview:



Eyes on safety anywhere without configuration..
3G/4G/Wifi network for your mobile required!